

FARM ANIMALS

Este juego puede ser utilizado para trabajar contenidos a diferente nivel de complejidad, según se explica a continuación.

FLASHCARDS

Este apartado contiene 16 tarjetas para trabajar los animales domesticos que suelen vivir en una granja. También incluye 10 tarjetas para trabajar las descripciones de los animales. Las imágenes utilizadas son de [pngfuel](#) y utilicé las más reales posibles para que los alumnos pudieran identificar fácilmente las características de cada animal.

GUESS WHAT ANIMAL

Para niveles más bajitos se puede distribuir una tarjeta a cada alumno y este debe leer las características de cada animal.

Para niveles un poco más avanzados las tarjetas se pueden recortar por la mitad y cada animal (la tarjeta con la imagen) debe buscar su mitad (la tarjeta con la descripción). Los alumnos se buscan preguntando: *What can you do? What have you got? What do you like? What do you give us? How are you?*

Otra posibilidad es jugar a Guess who? Un alumno lleva una imagen en la cabeza y debe adivinar quién es haciendo preguntas, mientras los demás solo pueden contestar con sí o no.

DOMINO GAME

Este juego contiene 17 tarjetas de domino para trabajar las descripciones de los animals domésticos de manera divertida. También hay 7 tarjetas en blanco que se pueden utilizar para ampliar los contenidos.

Si te gusta este material, agradecería mucho tu evaluación. Su distribución está estrictamente prohibida si no tienes el permiso escrito de su autor @teachercrina. Si conoces a alguien interesado en este material, por favor, redirreccionalo a mi página de Instagram <https://www.instagram.com/teachercrina/>.

Todas las fuentes utilizadas en este documento fueron creadas por @myclassroomcorner.



FARM ANIMALS

This game can be used to work on contents at different levels of complexity, as it is explained in the following lines.

FLASHCARDS

This part contains 16 cards to work with domestic animals that use to live on a farm. It also includes 10 cards to work on animal description. The images used in this document are from [pngfuel](#) and I used the most similar to real animals as possible so that students could easily identify the characteristics of each animal.

GUESS WHAT ANIMAL

For lower levels we can give each student a card and he/she should read the characteristics of each animal. For more advanced levels, the cards can be cut in half and each animal (the image card) has to look for its half (the description card). The students will look for each other asking questions like: *What can you do? What have you got? What do you like? What do you give us? How are you?* Another possibility is to play **Guess who?** A student has an image on his/her head, and they have to guess who they are by asking questions, while the rest of the class can only answer with **yes** or **no**.

DOMINO GAME

This game contains 17 domino cards to work on the description of domestic animals in a fun way. There are also 7 empty cards that can be used to include more contents.

If you like this material please leave your feedback. Its distribution is strictly forbidden unless you have the written permission of the author @teachercrina. If you know someone interested in it please redirect them to my instagram page <https://www.instagram.com/teachercrina/>

Todas las fuentes utilizadas en este documento fueron creadas por @myclassroomcorner.



FARM ANIMALS

FLASHCARDS

GUESS
WHAT
ANIMAL

DOMINO
GAME



FLASHCARDS



HORSE



SHEEP



GOAT



COW



GOOSE



RAM



DUCK



DONKEY



ROOSTER



TURKEY



CAT



RABBIT



DOG



MOUSE



PIG



HEN



FEATHERS



BEAK



CLAWS



WHISKERS



TAIL



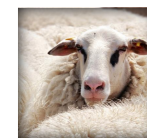
WINGS



FUR



WOOL





Teacher Cima



Teacher Cima



Teacher Cima

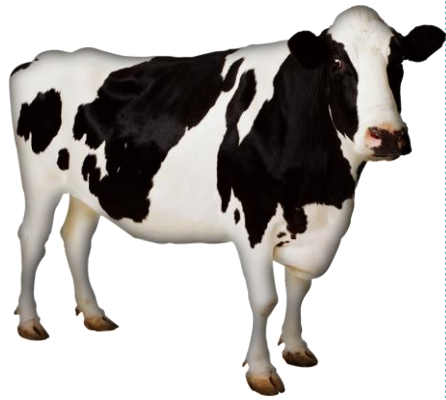


Teacher Cima





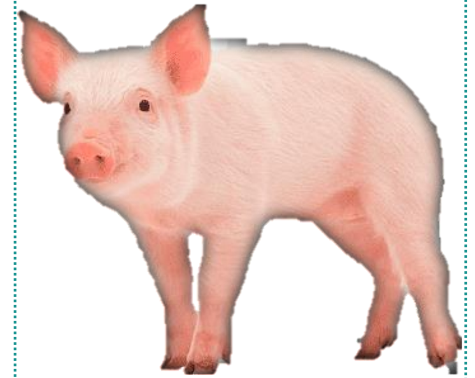
Teacher Cima



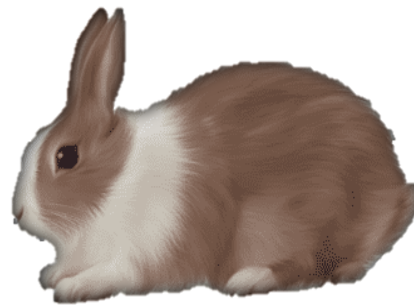
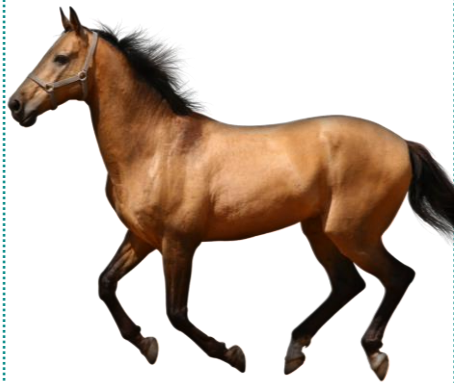
Teacher Cima



Teacher Cima



Teacher Cima





Teacher China



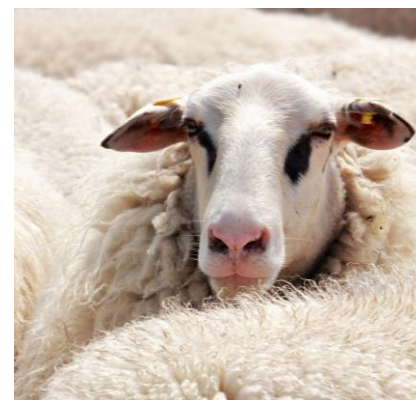
Teacher China



Teacher China



Teacher China



GUESS WHAT ANIMAL

it is...

This animal can _____. It's got _____. It likes _____.
It gives us _____. It is _____. What animal is it?

I think it is the...



GUESS WHAT ANIMAL

it is...

This animal can _____. It's got _____. It likes _____.
It gives us _____. It is _____. What animal is it?

I think it is the...



GUESS WHAT ANIMAL

it is...

This animal can _____. It's got _____. It likes _____.
It gives us _____. It is _____. What animal is it?

I think it is the...



GUESS WHAT ANIMAL

it is...

This animal can _____. It's got _____. It likes _____.
It gives us _____. It is _____. What animal is it?

I think it is the...



GUESS WHAT ANIMAL

it is...

This animal can _____. It's got _____. It likes _____.
It gives us _____. It is _____. What animal is it?

I think it is the...



GUESS WHAT ANIMAL

it is...

This animal can _____. It's got _____. It likes _____.
It gives us _____. It is _____. What animal is it?

I think it is the...



GUESS WHAT ANIMAL

it is...



This animal can _____. It's got _____. It likes _____. It gives us _____. It is _____. What animal is it?

CAN

walk

HAS GOT

Wool and small ears

LIKES

Walking and running

GIVES US

Meat, wool and milk

IS

grey



SHEEP



CAN

Walk

HAS GOT

a big tail, feather, claws and a beak

LIKES

eating seeds and corn

GIVES US

eggs and meat

IS

Big and grumpy



TURKEY



CAN

Sing in the morning

HAS GOT

A big tail and colourful feathers

LIKES

Running and singing

GIVES US

The alarm in the morning

IS

red, blue, green and black



ROOSTER



CAN

walk and run

HAS GOT

big horns and wool

LIKES

Grass and water

GIVES US

meat

IS

Grey, white or black



RAM



CAN

jump

HAS GOT

whiskers and fur

LIKES

mice and milk

GIVES US

love

IS

grey



CAN

Walk and run

HAS GOT

a long tail and big body

LIKES

grass

GIVES US

Milk and meat

IS

Black and white



CAN

swim

HAS GOT

feathers, wings and a beak

LIKES

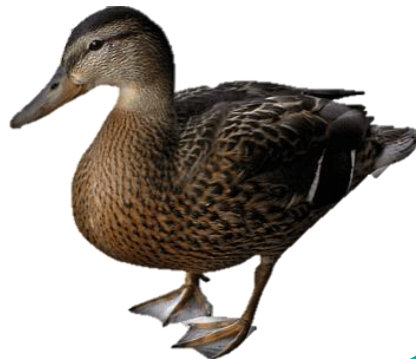
Swimming

GIVES US

Meat and eggs

IS

brown



CAN

Walk and run

HAS GOT

a long tail and long ears

LIKES

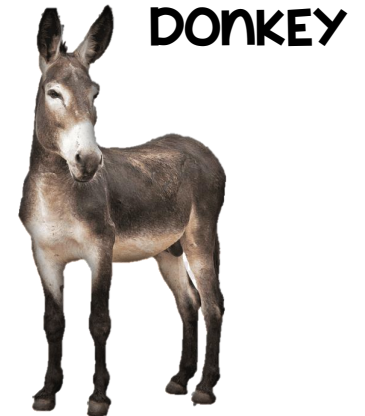
eating grass

GIVES US

Help with weights

IS

grey



CAN

bark

HAS GOT

Big ears and fur

LIKES

Running and playing

GIVES US

friendship and puppies

IS

Brown, white and black



CAN

jump and run

HAS GOT

Small horns, a small tail and brown hair

LIKES

Grass and tree branches

GIVES US

Milk and meat

IS

Brown



CAN

swim

HAS GOT

An orange beak and
white and grey feathers

LIKES

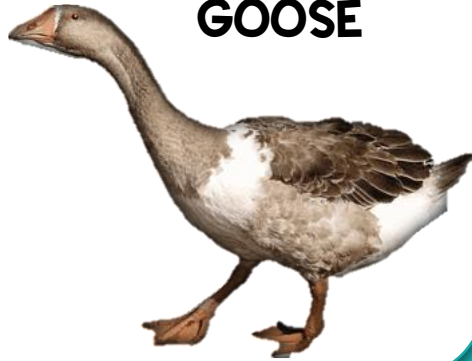
Swimming and walking

GIVES US

Meat and eggs

IS

Grey and white



GOOSE



CAN

jump and run

HAS GOT

a short tail, long ears,
claws and fur

LIKES

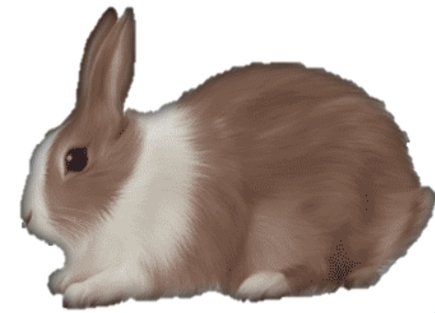
grass, carrots and lettuce

GIVES US

meat

IS

brown and white



RABBIT



CAN

Walk and run

HAS GOT

Red feathers and a beak

LIKES

laying eggs and eating corn

GIVES US

Meat and eggs

IS

red



HEN



CAN

Walk and sink

HAS GOT

a curly tail and pink skin

LIKES

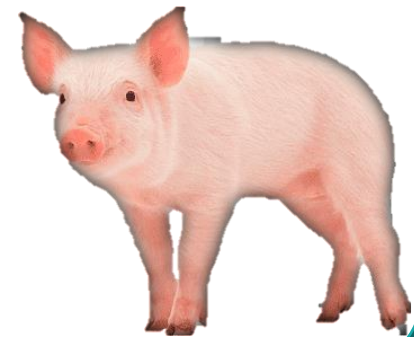
eating everything and taking a
bath in the mud

GIVES US

Meat and leather

IS

pink



PIG



CAN

Run very fast

HAS GOT

long legs, a tail, a mane
and small ears

LIKES

eating apples and carrots

GIVES US

a ride, takes us on its back

IS

Brown and tall



HORSE



CAN

jump and run

HAS GOT

Small ears, a long tail and fur

LIKES

eating cheese

GIVES US

lots of trouble if it eats our
internet cable

IS

Brown



MOUSE



DOMINO GAME

start here



CAT



CAN

jump

HAS GOT

whiskers and fur

LIKES

mice and milk

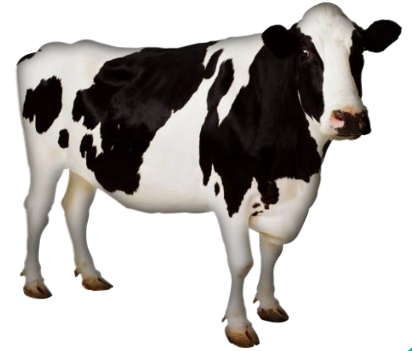
GIVES US

love

IS

grey

COW



CAN

Walk and run

HAS GOT

a long tail and big body

LIKES

grass

GIVES US

Milk and meat

IS

Black and white



HORSE



CAN

Run very fast

HAS GOT

long legs, a tail, a mane

and small ears

LIKES

eating apples and carrots

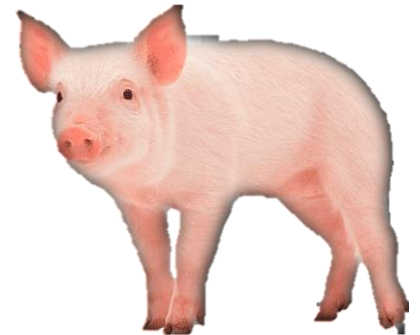
GIVES US

a ride, takes us on its back

IS

Brown and tall

PIG



CAN

Walk and sink

HAS GOT

a curly tail and pink skin

LIKES

eating everything and taking

a bath in the mud

GIVES US

Meat and leather

IS

pink



DOG



CAN

bark

HAS GOT

Big ears and fur

LIKES

Running and playing

GIVES US

friendship and puppies

IS

Brown, white and black

HEN



CAN

Walk and run

HAS GOT

Red feathers and a beak

LIKES

laying eggs and eating corn

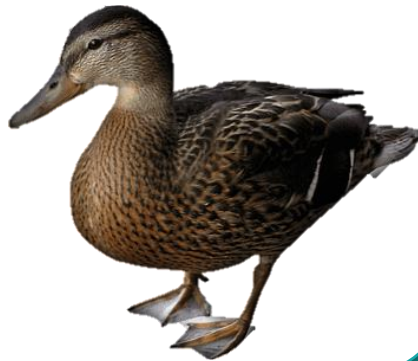
GIVES US

Meat and eggs

IS

red

DUCK



CAN

swim

HAS GOT

feathers, wings and a beak

LIKES

Swimming

GIVES US

Meat and eggs

IS

brown

GOAT



CAN

jump and run

HAS GOT

Small horns a small tail and brown hair

LIKES

grass and tree branches

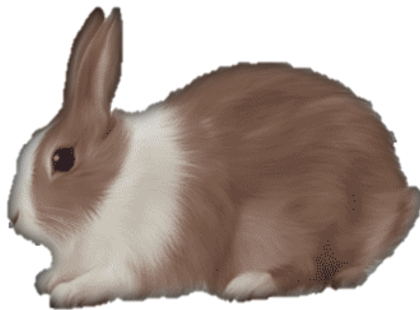
GIVES US

Milk and meat

IS

Brown

RABBIT



CAN

jump and run

HAS GOT

a short tail, long ears, claws and fur

LIKES

grass, carrots and lettuce

GIVES US

meat

IS

brown and white

DONKEY



CAN

Walk and run

HAS GOT

a long tail and long ears

LIKES

eating grass

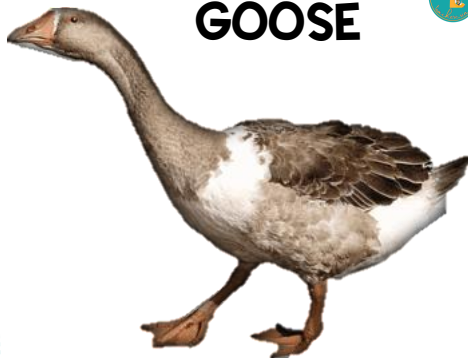
GIVES US

Help with weights

IS

grey

GOOSE



CAN

swim

HAS GOT

An orange beak and white and grey feathers

LIKES

Swimming and walking

GIVES US

Meat and eggs

IS

Grey and white

MOUSE



CAN

jump and run

HAS GOT

Small ears, a long tail and fur

LIKES

eating cheese

GIVES US

lots of trouble if it eats our internet cable

IS

Brown

SHEEP**CAN**

walk

HAS GOT

Wool and small ears

LIKES

Walking and running

GIVES US

Meat, wool and milk

IS

grey

TURKEY**CAN**

Walk

HAS GOT

a big tail, feather, claws and a beak

LIKES

eating seeds and corn

GIVES US

eggs and meat

IS

Big and grumpy

RAM**CAN**

walk and run

HAS GOT

big horns and wool

LIKES

Grass and water

GIVES US

meat

IS

Grey, white or black

ROOSTER**CAN**

Sing in the morning

HAS GOT

A big tail and colourful feathers

LIKES

Running and singing

GIVES US

The alarm in the morning

IS

red, blue, green and black

**END
GAME**



